



Galerie 1900-2000
David et Marcel Fleiss



PIVOTAL

Drawings and Works on Paper From Artists of the XXth Century Avant-Garde

January 27-April 27, 2024





PIVOTAL

Drawings and Works on Paper From Artists of the XXth Century Avant-Garde

Pivotal features works on paper by the protagonists of some of the most significant twentieth-century avant-garde art movements: Dada, Surrealism, as well as representations from the early pop and conceptual art movements.

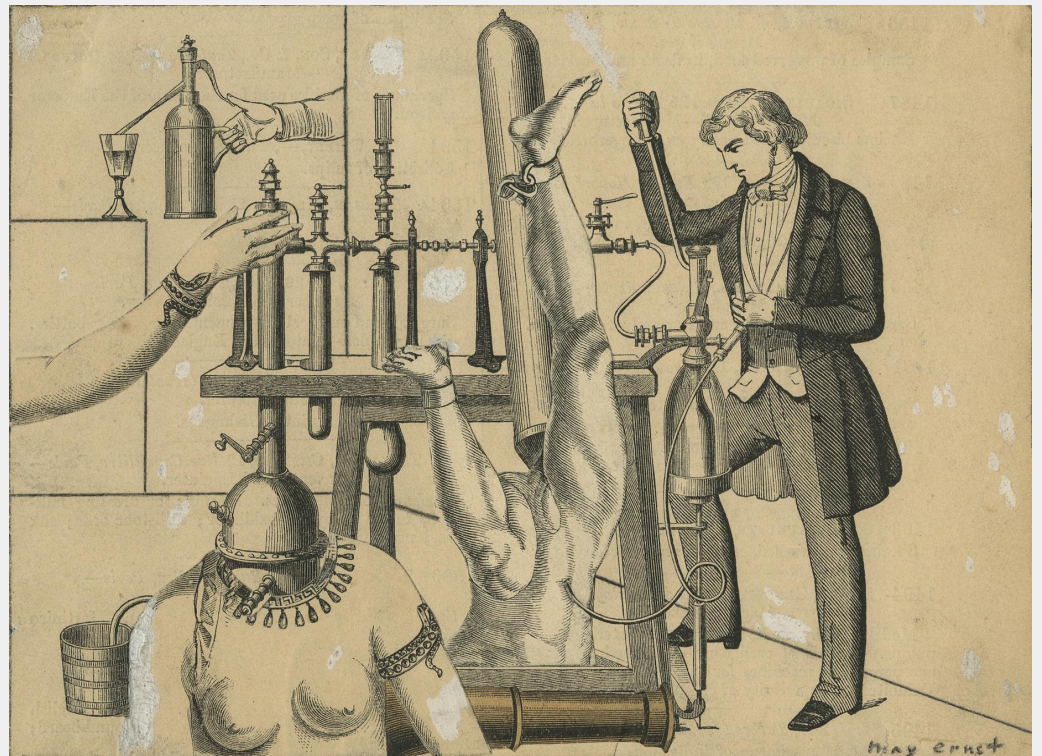
Galerie 1900-2000 has a long history in placing works of art from these historic movements, with the unique proximity to the estates of Andre Breton, Hans Bellmer, and Francis Picabia, affording the gallery firsthand knowledge into the histories of the pictures being exhibited and sold.

Artists in our presentation include Hans Bellmer, André Breton, Erwin Blumenfeld, Serge Charchoune, Paul Citroen, Jean Dubuffet, Marcel Duchamp, Suzanne Duchamp, Max Ernst, Albert Gleizes, Arshile Gorky, Paul Joostens, On Kawara, Edward Kienholz, Frantisek Kupka, Wifredo Lam, Roberto Matta, Wolfgang Paalen, Francis Picabia, Ed Ruscha, Kurt Schwitters, Tom Seligmann, Yves Tanguy, Tom Wesselmann, and Adolf Wolfli, whose works on paper are examples of great contributions to the visual art diaspora.

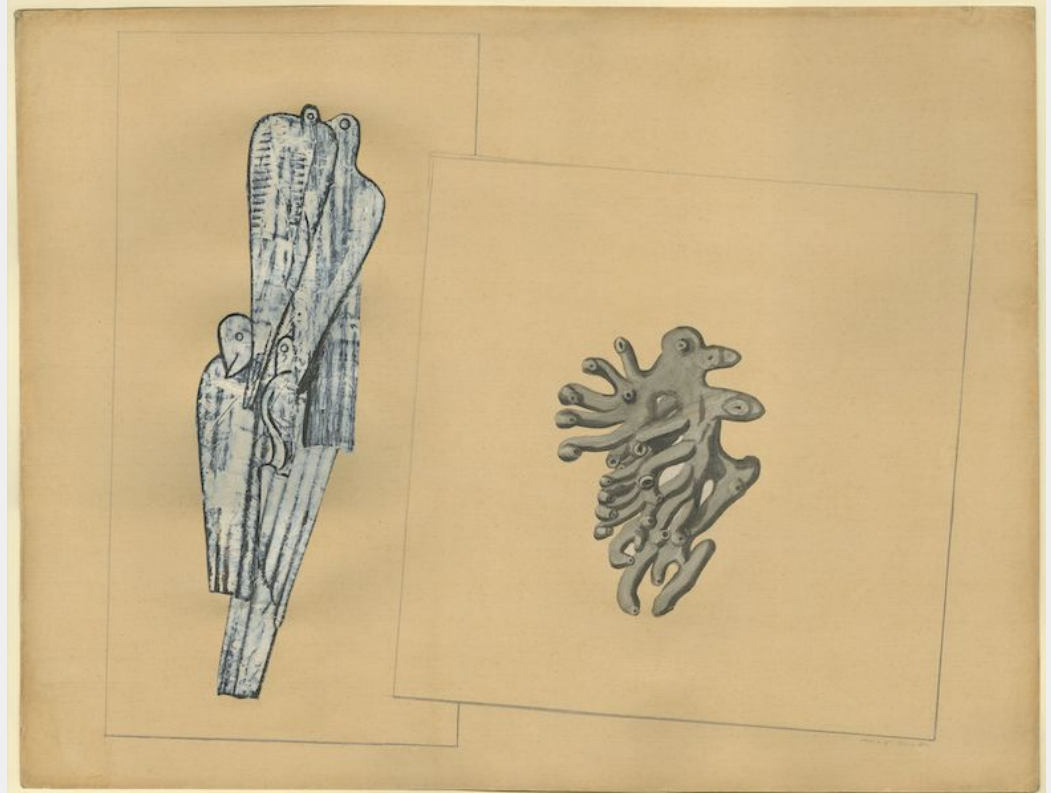


MAX ERNST

Untitled, 1939
Signed lower right.
Collage with gouache highlights
4 ²⁹/₆₄ X 6 ³/₁₆ in (11.3 x 15.7 cm)



Doves and coral (Birds and madrepore), 1932
Signed twice lower right
Dated lower right
Oil, collage and pencil on paper
20 x 25 in (50.6 x 65.2 cm)





MAX ERNST

Santa Conversazione, 1921
Signed lower right
Photograph of a collage
8 ⁵⁵/₆₄ x 5 ⁵/₁₆ in (22.5 x 13.5 cm)



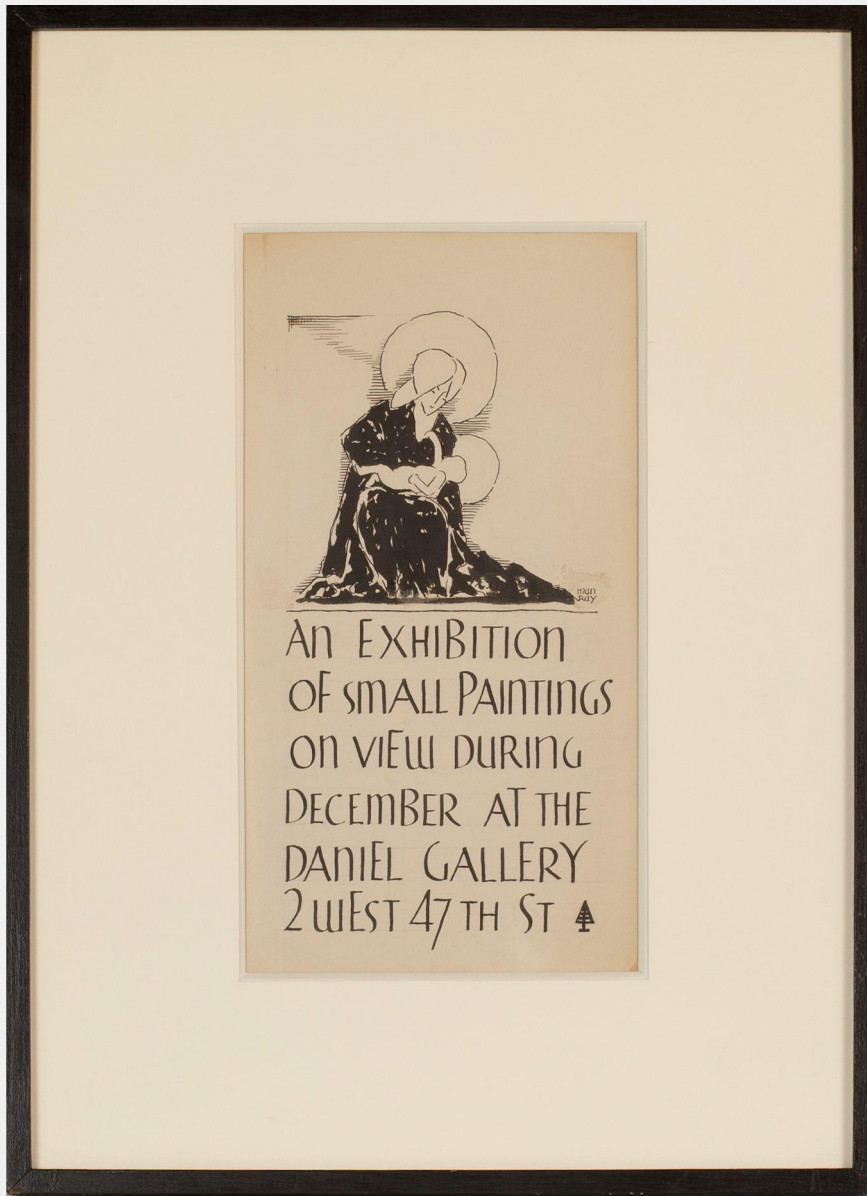
SUZANNE DUCHAMP



Joy Factory, 1920, Gouache, watercolor, pencil and ink on paper, 17 2/3 x 21 5/8 in (45.3 x 55 cm)



MAN RAY



Exhibition at Daniel Gallery, New York, 1915
Signed under the drawing on the right.
Ink on paper
12 ¹/₆₄ x 6 ¹/₂ in (30.5 x 16.5 cm)



Judex Gala, 1928
Monogrammed MR at the top left in the collar.
Bonding to a rayograph
9 ²⁹/₆₄ x 6 ¹¹/₁₆ in (24 x 17 cm)



Galerie 1900-2000
David et Marcel Fleiss



JIM DINE

Shower #3, 1962

Titled, signed and dated upper right

Acrylic, colored oil stick and pencil on joined paper

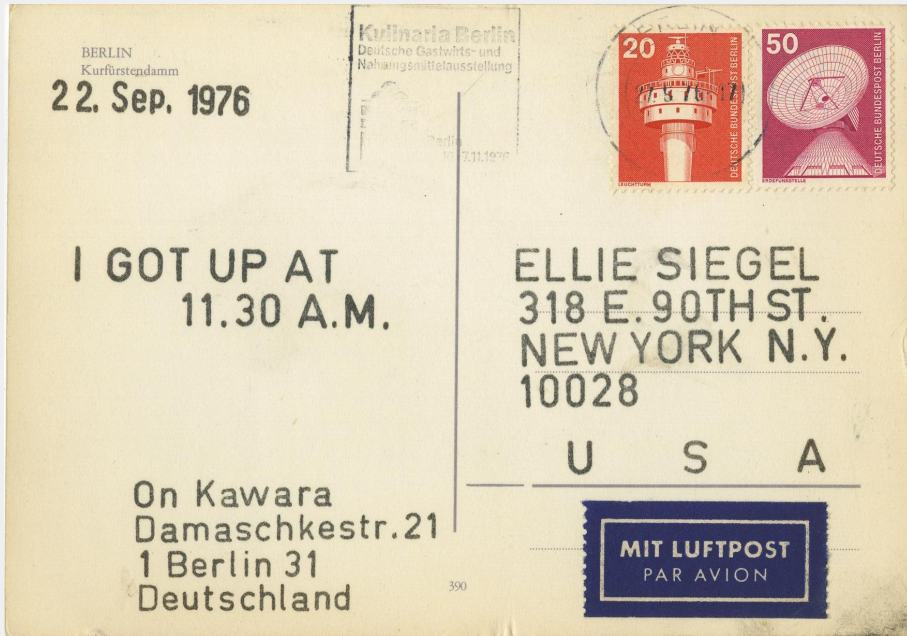
37⁶³/₆₄ x 23¹³/₁₆ in (96.5 x 60.5 cm)





YVES TANGUY

Untitled, 1943
Drawing and collage
5 ½ x 8 ½ in (14 x 21.7 cm)



ON KAWARA

ON KAWARA
I Got Up, 1976
Post card
4 x 5 1/2 in (10.4 x 14.8 cm)





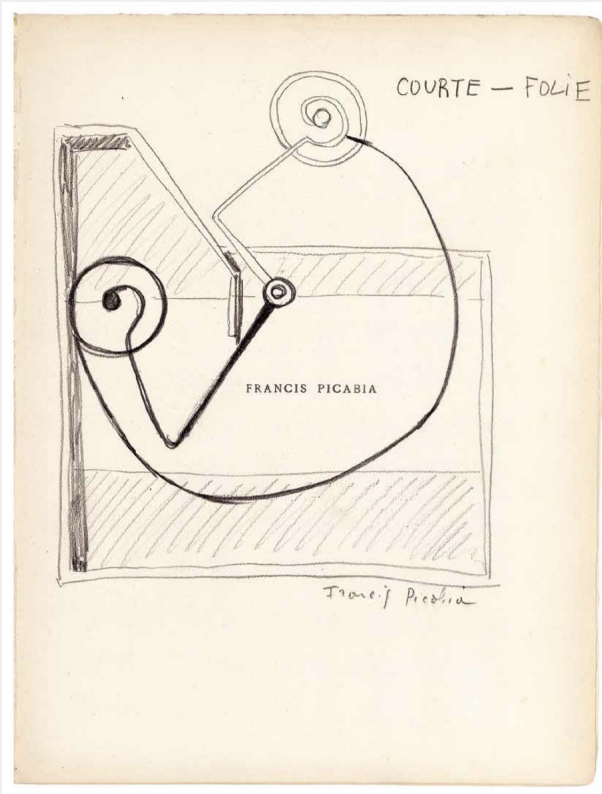
FRANCIS PICABIA



L'Enfer (Hell), Ca 1925-27, Gouache on paper, 19 5/8 x 24 5/8 in (50 x 62.5 cm)



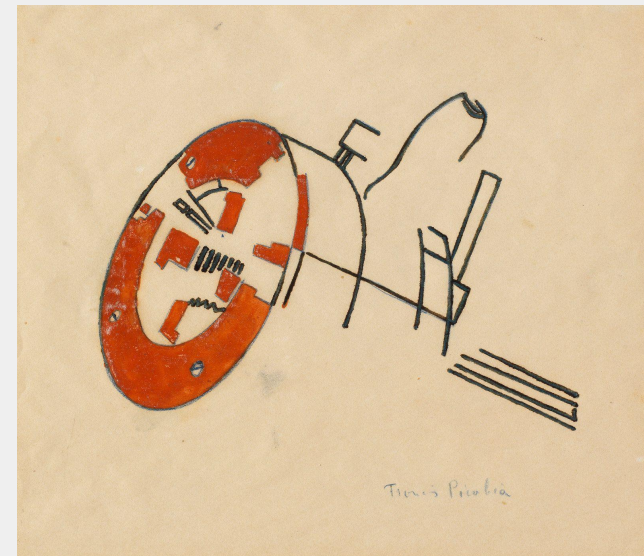
FRANCIS PICABIA



COURTE-FOLIE, 1920
Dessin original au crayon dans un livre illustré
13 ³/₁₆ x 9 ²⁷/₃₂ in (33.5 x 25 cm)



Dame! (Lady!), 1920
India ink and pencil on paper
10 ³/₈ x 7 ¹/₂ in (26.5 x 19 cm)



Untitled, 1918-1919
Signed lower right.
Enamel paint, ink and colored pencil on paper
8 ⁵/₆₄ x 9 ¹/₁₆ in (20.5 x 23 cm)



KURT SELIGMANN



Untitled, ca. 1940, Indian ink on paper, 20 1/8 x 26 1/3 in (51 x 66.5 cm)



KURT SCHWITTERS

Mz 255 Dromedar, 1921
Signed and dated on the mount lower right
Collage of printed papers on paper
6 ²⁷/₃₂ x 5 ²⁵/₃₂ in (17.4 x 14.7 cm)





JEAN DUBUFFET



Automobile 7643-Y-4 (D14), 1961
Signed and dated lower right.
Indian ink on paper
7⁷/₈ x 7⁷/₈ in (20 x 20cm)



ED RUSCHA



CHINA

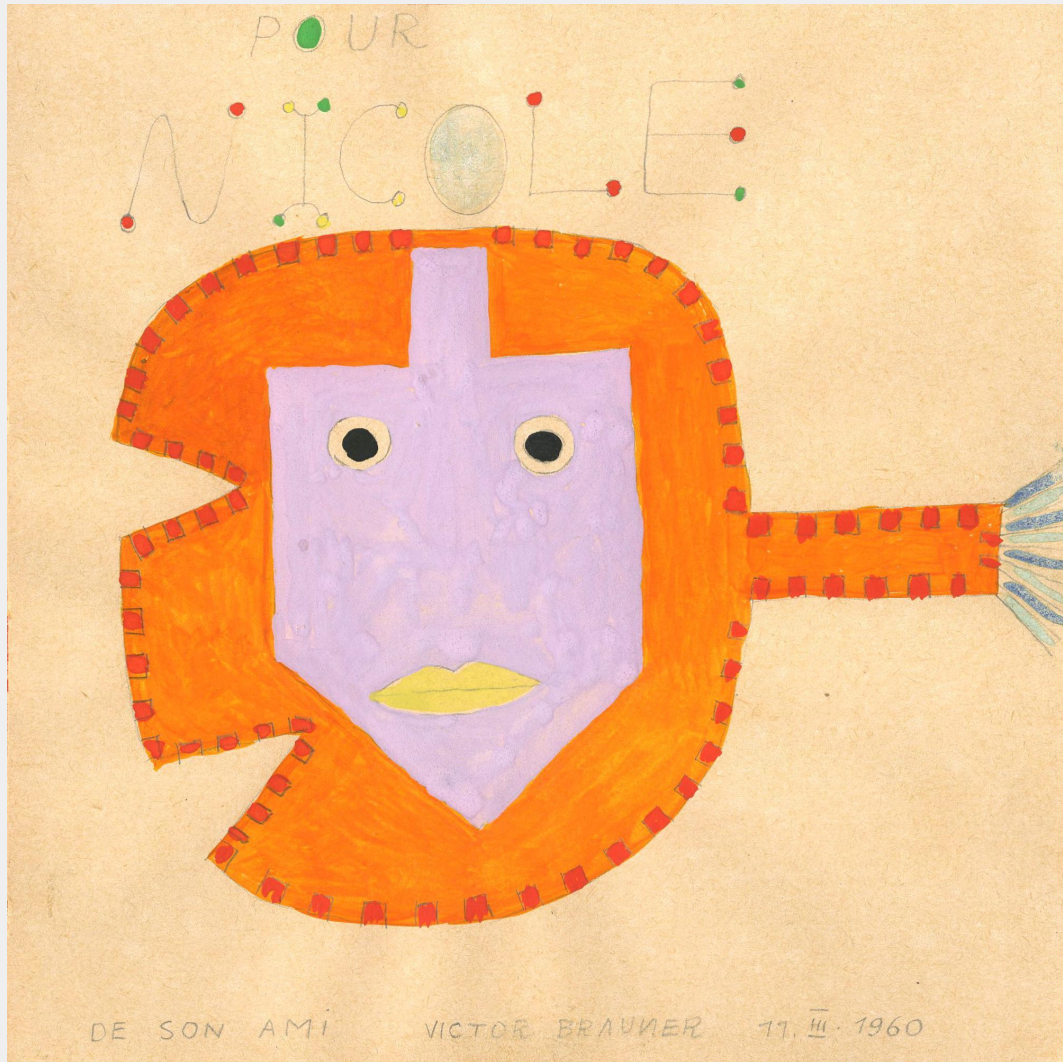
For Greg

Ed Ruscha '84

CHINA, 1984, Signed and dated lower right, Dry pigment on paper, 12 x 23 in (30.5 x 58.4 cm)



VICTOR BRAUNER



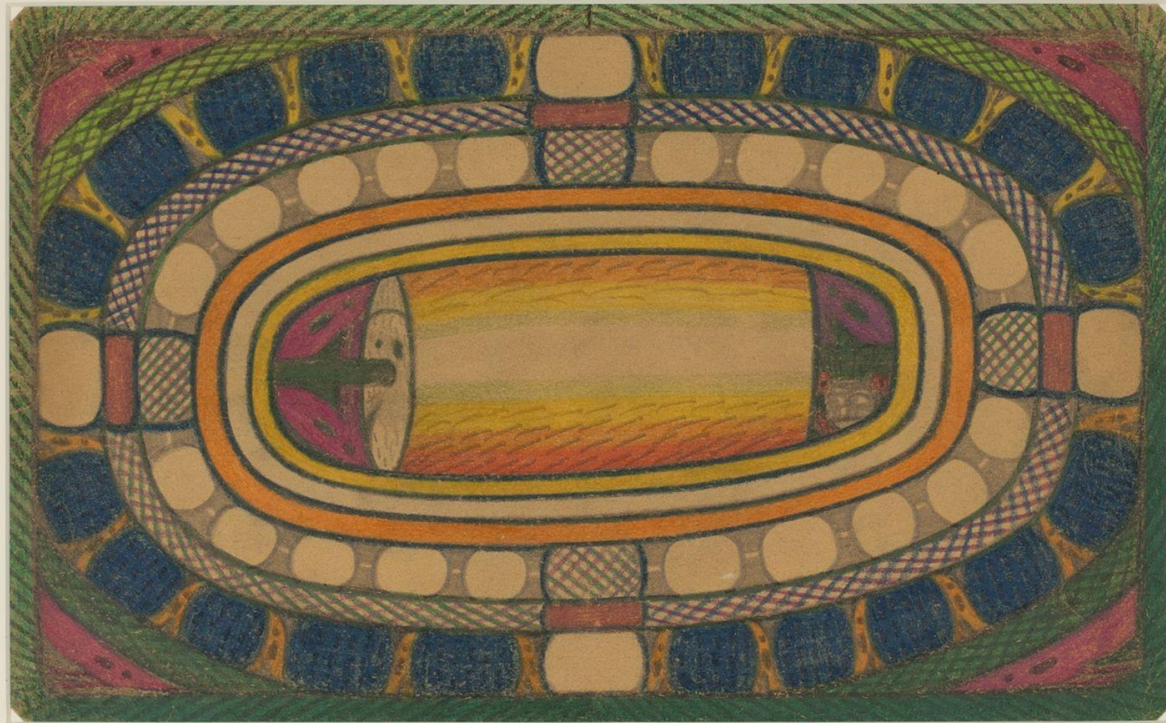
Portrait, 1960
Signed and dated at the bottom.
Gouache and pencil on paper
6 ¹¹/₁₆ x 6 ¹¹/₁₆ (17 x 17 cm)



Untitled, Ca 1953
Ink wash, paraffin and colored pencil on paper
9 ¹/₄ x 8 ¹⁷/₆₄ in (23.5 x 21 cm)



ADOLPH WOLFLI



Die sogenannte Trohle od'r, Aker=Walter, 1928, Colored pencil on paper, 9 ½ x 15 in (24 x 38 cm)